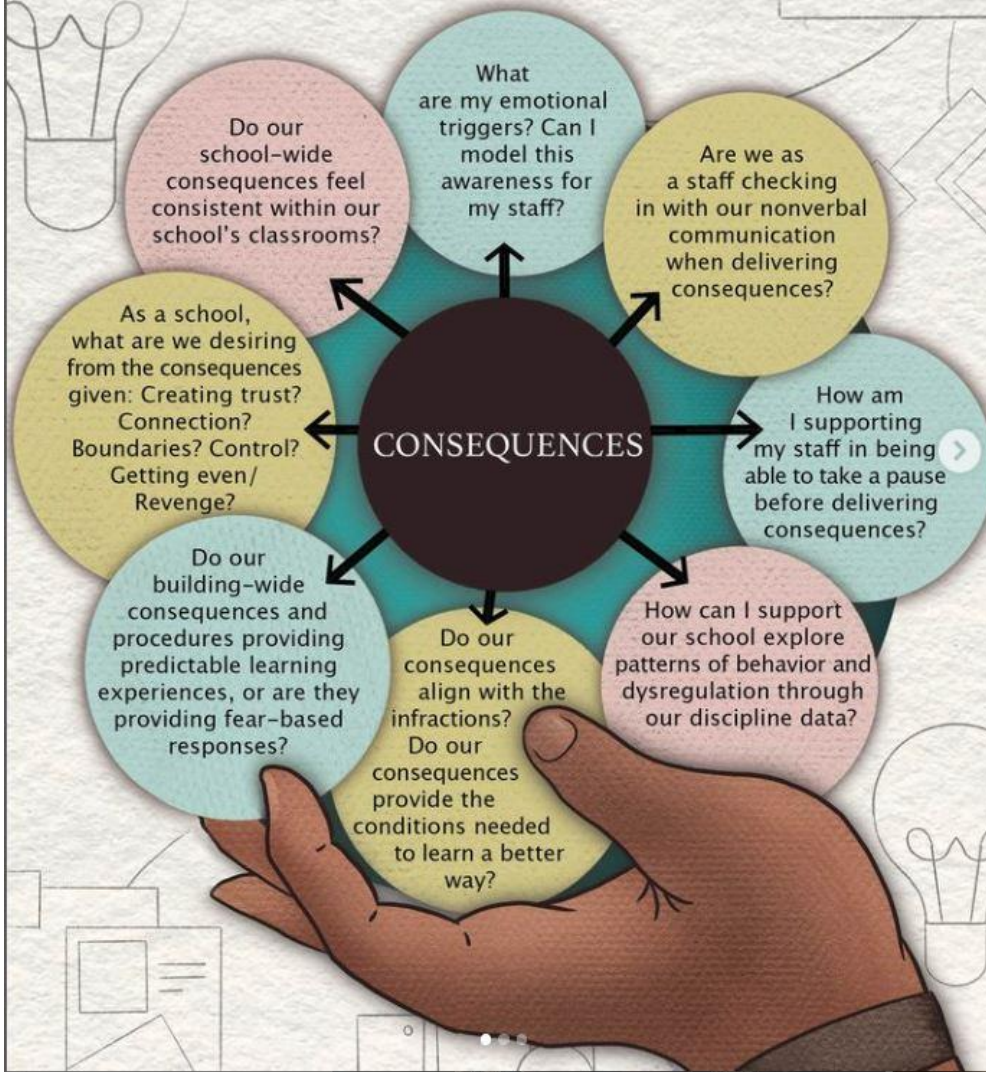


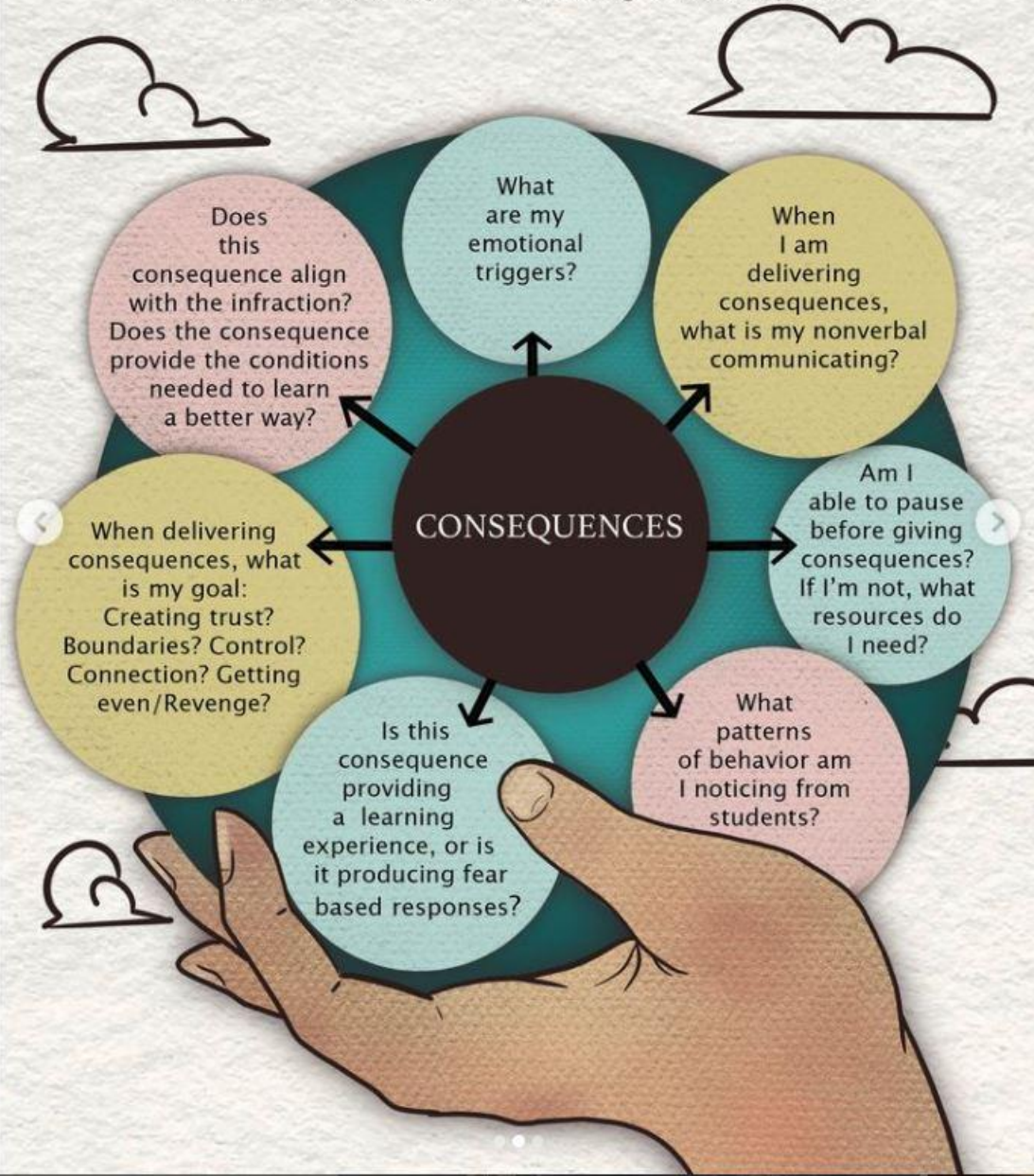
# THE CONSEQUENCE WHEEL FOR ADMINISTRATORS

The adult nervous system reflecting on consequences



# THE CONSEQUENCE WHEEL FOR TEACHERS

The adult nervous system reflecting on consequences



# THE CONSEQUENCE WHEEL FOR STUDENTS

## Co-created consequences:

These should change frequently. The guidelines and norms we set up in August should not be the same as when we end the school year, because these change as students' nervous systems develop and grow throughout the year.

